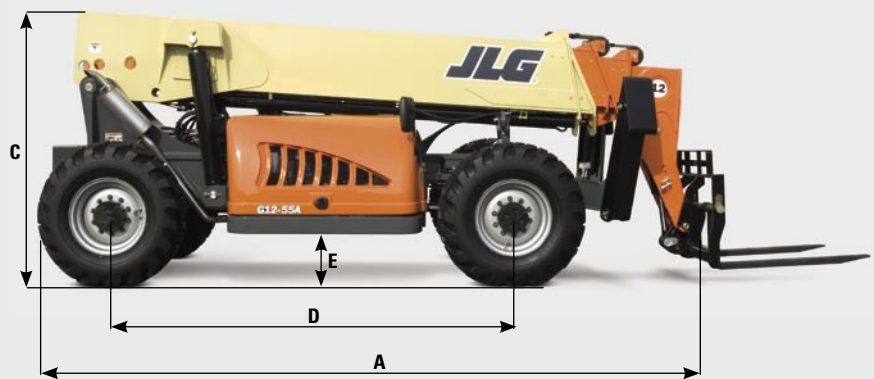
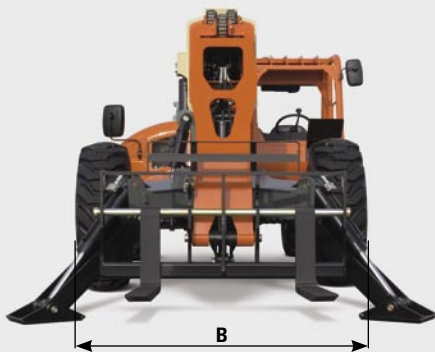


**JLG® Telehandlers**  
SPECIFICATIONS

	<b>G6-42A</b>	<b>G9-43A</b>	<b>G10-55A</b>	<b>G12-55A</b>
Rated Capacity @ 24 in. (610 mm) Load Center	6,600 lb (2,994 kg)	9,000 lb (4,082 kg)	10,000 lb (4,536 kg)	12,000 lb (5,443 kg)
Maximum Lift Height	42 ft (12.8 m)	43 ft (13.11 m)	55 ft (16.76 m)	55 ft (16.76 m)
Capacity @ Maximum Lift Height	6,600 lb (2,994 kg)	7,000 lb (3,175 kg)	5,000 lb (2,268 kg)	5,000 lb (2,268 kg)
Maximum Reach	29 ft (8.84 m)	30 ft 6 in. (9.3 m)	42 ft (12.8 m)	42 ft (12.8 m)
Capacity @ Maximum Reach	1,000 lb (454 kg)	1,500 lb (680 kg)	3,000 lb (1,361 kg)	3,500 lb (1,588 kg)
Approximate Operating Weight	20,400 lb (9,253 kg)	26,100 lb 11,839 kg)	34,400 lb (15,604 kg)	35,100 lb (15,921 kg)
A. Length (Less Forks)	212.6 in. (5.40 m)	237 in. (6.02 m)	240 in. (6.10 m)	240 in. (6.10 m)
B. Width	95.5 in. (2.43 m)	95.3 in. (2.42 m)	101 in. (2.57 m)	102 in. (2.59 m)
C. Height	94 in. (2.39 m)	95.5 in. (2.43 m)	101 in. (2.57 m)	101 in. (2.57 m)
D. Wheelbase	128 in. (3.25 m)	132 in. (3.35 m)	144 in. (3.66 m)	144 in. (3.66 m)
E. Ground Clearance	16.4 in. (417 mm)	19 in. (483 mm)	18 in. (457 mm)	18 in. (457 mm)
Outside Turning Radius	144 in. (3.66 m)	144 in. (3.66 m)	168 in. (4.27 m)	168 in. (4.27 m)
Drive	4 x 4	4 x 4	4 x 4	4 x 4
Engine	John Deere 4045T	John Deere 4045T	Perkins 1104D	Perkins 1104D
HP and RPM	99 hp @ 2,500 rpm	99 hp @ 2,500 rpm	125 hp @ 2,400 rpm	140 hp @ 2,400 rpm
Transmission	Powershift	Powershift	Powershift	Powershift
Steering	All-Wheel	All-Wheel	All-Wheel	All-Wheel
Tires	13:00 x 24 - 12PR, G2 type	13:00 x 24 - 12PR, G2 type	14:00 x 24 - 12PR, G2 type	17:50 x 25 - 12PR, G2 type
Maximum Travel Speed	19.5 mph (31.4 kmph)	19.5 mph (31.4 kmph)	20 mph (32 kmph)	20 mph (32 kmph)
Frame Tilt Left/Right Frame Leveling	±10 Degrees	±10 Degrees	±10 Degrees	±10 Degrees



For complete specifications, visit [www.jlg.com](http://www.jlg.com)

Due to continuous product improvements, JLG Industries reserves the right to make specification and/or equipment changes without prior notification. These machines meet or exceed ASME B56.6-2005 as originally manufactured for intended applications.